

# St Wilfrid's CE Primary School, Northenden

## Weekly Newsletter

**Friday 4th January**  
**Issue Number 15**  
**(2017-2018)**

Don't forget to check  
 your Dojo  
 App for more  
 details!



Patterdale Road, Northenden, Manchester, M22  
 4NR

Tel: 0161 998 3663

E-mail: [admin@st-wilfridscofe.manchester.sch.uk](mailto:admin@st-wilfridscofe.manchester.sch.uk)

Website: [www.st-wilfridscofe.manchester.sch.uk](http://www.st-wilfridscofe.manchester.sch.uk)



*From our Head of School:* Welcome Back All. The staff have commented on how lovely it has been to see such enthusiastic and happy faces bounding through the gate on Thursday. We hope you had a restful holiday and are beating the January blues. We have talked about 'Going for Goals' with a focus on resolutions for 2018 and what the children would like to achieve. The staff have said the children have had some very thoughtful resolutions so we look forward to seeing this happen, with the children sharing these with the rest of the school on Monday.



### Staffing

A warm welcome to Kate Will – our new Year 3 teacher and leader of History. Mrs Will has spent the first two days getting to know the children with Mrs Taylor. We also wish Mrs Taylor all the best on her maternity leave and we will update you in due course with the exciting news.

### Year Group Information

Each Key Stage has updated their half termly on the website in the parents section. These outline the learning focus and information relevant to your child's specific class, such as PE, swimming and any upcoming trips.

### Apply Now for a place at St Wilfrid's CE Primary School

You need to apply for a 2018 Reception place before 15 January if your child was born between 1 September 2013 and 31 August 2014. All applications must be made via the Manchester Admissions Website [http://www.manchester.gov.uk/info/500321/primary\\_school\\_admissions/7264/apply\\_for\\_a\\_reception\\_class\\_place\\_for\\_september\\_2018/4](http://www.manchester.gov.uk/info/500321/primary_school_admissions/7264/apply_for_a_reception_class_place_for_september_2018/4)



### Class Assemblies

Class assemblies will continue this term and into the summer term. This is where each class will do a short 15 min performance which may include some drama, dance and a song for their parents and to the whole school. The purpose of this is to promote performance and confidence in the children and for the class to do something individual. All assemblies start at

Year 6 – Miss Vermeulen	Tuesday 6 <sup>th</sup> February 2018
Year 4 – Miss Clark	Tuesday 13 <sup>th</sup> February 2018
Year 2 – Miss Deeley	Wednesday 14 <sup>th</sup> February 2018
Year 1 – Mrs Doyle	Wednesday 7 <sup>th</sup> March 2018
Reception 2 – Mrs Peters	Wednesday 14 <sup>th</sup> March 2018
Year 5 – Mr Goodwin	Tuesday 20 <sup>th</sup> March 2018
Reception 1 – Miss Swinburn	Wednesday 18 <sup>th</sup> April 2018
Year 3/4 – Mrs Dhaliwal	Tuesday 24 <sup>th</sup> April 2018
Nursery – Mrs Hope and Mrs Stevenson	Wednesday 20 <sup>th</sup> June 2018
Year 1/2 – Mrs Argles	Wednesday 27 <sup>th</sup> June 2018

### Key Dates for Spring 2018

Monday 8th Jan:	Fencing for Year 5 and Yr 6
Tuesday 9th Jan:	Yr 4 MHA Production Practice
Thursday 18th Jan:	Peace Mala Sponsored Silence Day
Monday 22nd Jan:	Yr 6 First Aid Workshop
Tuesday 23rd Jan:	Yr 6 First Aid Workshop Yr 5 to Northenden Methodist Church
Thursday 25th Jan:	Aldi Sharston Store Opening + Assembly Visit Yr 6 First Aid Workshop Pupil Parliament
Monday 29th Jan:	Fencing for Year 5 and Yr 6
Friday 2nd Feb:	Yr 3 & 4 trip to Manchester City Centre
Tuesday 6th Feb:	Safer Internet Day
Tuesday 13th Feb:	PTA Valentine's Disco. More details to follow from the PTA
Thursday 15th Feb:	Pinocchio Theatre Performance
Friday 16th Feb:	Break up at 3:10pm for Half-Term
Monday 26th Feb:	Back to School for Spring 2
Thursday 1st March:	World Book Day—more details to follow from Mrs Dhaliwal
Friday 2nd March:	Yr 4 MHA Production Practice
Friday 9th March:	Yr 4 MHA Production Practice
Wed 14th March:	Parent Meetings (3:20pm—5:00pm)
Thurs 15th March:	Parent Meetings (3:20pm—7:00pm)
Tues 27th March:	KS 2 American Dance
Wed 28th March:	Yr 4 Production at MHA (afternoon performance & evening performance)
Thurs 29th March:	Easter Service at St Wilfrid's Church @ 9:30pm led by Yr 5 & 6 Break Up for Easter at 2pm
Mon 9th April:	INSET DAY. School Closed for Children
Tues 10th April:	Back to School for Summer 1



### Easyfundraising.org.uk

As you know we are really keen to continue with funding our outdoor area, for KS 1 and KS 2 children. Every penny helps and with this in mind please check out the website—  
<https://www.easyfundraising.org.uk/causes/swatmanchester/?q=pta%20st&cat=cause-autosuggest>

The school makes money simply by you shopping at no extra cost to you. We need as many supporters as possible so tell your friends and family.

### Parking outside the school

Last term there were many issues with parking and parking inappropriately, especially on Elmfield Road. There are parking restrictions around St Wilfrid's so please be considerate to our neighbours and our community. Please allow yourself plenty of time to find a safe parking place.

PLEASE REMEMBER THAT THE SAFETY OF YOUR CHILDREN IS OUR MAIN CONCERN.



### Extra-Curricular Activities: Week Beginning 08.01.2018

<b>MONDAY:</b>	7:45am-Breakfast club.
<b>8th January</b>	3.15-4.00. Choir 3.15-4.15 MCFC 3.15-4.00 Library 3.15-4.00 Literacy Year 6
<b>Tuesday:</b>	7.45am-Breakfast club
<b>9th January</b>	<b>3.15-4.15 External provider junior sports stars</b> 3.15-4.00 Cross Country Running 3.15-4.00 Cookery 3.15-4.00 Kiddi Choir 3.15-4.00 Drawing 3.15-4.00 I Pads 3.15-4.00 Adventure/Art Club
<b>Wednesday:</b>	7.45am-Breakfast Club
<b>10th January</b>	School Council (Lunchtime)
<b>Thursday:</b>	7.45am-Breakfast Club
<b>11th January</b>	3.15-4.00 Multisports 3.15-4.00 Maths Booster Year 6 3.15-4.00 Board Games
<b>Friday:</b>	7.45am-Breakfast Club
<b>10th January</b>	<b>3.15-4.15 External Provider Boxing</b>

## Attendance and Punctuality

LET'S ALL TRY TO IMPROVE ATTENDANCE AND PUNCTUALITY IN 2018

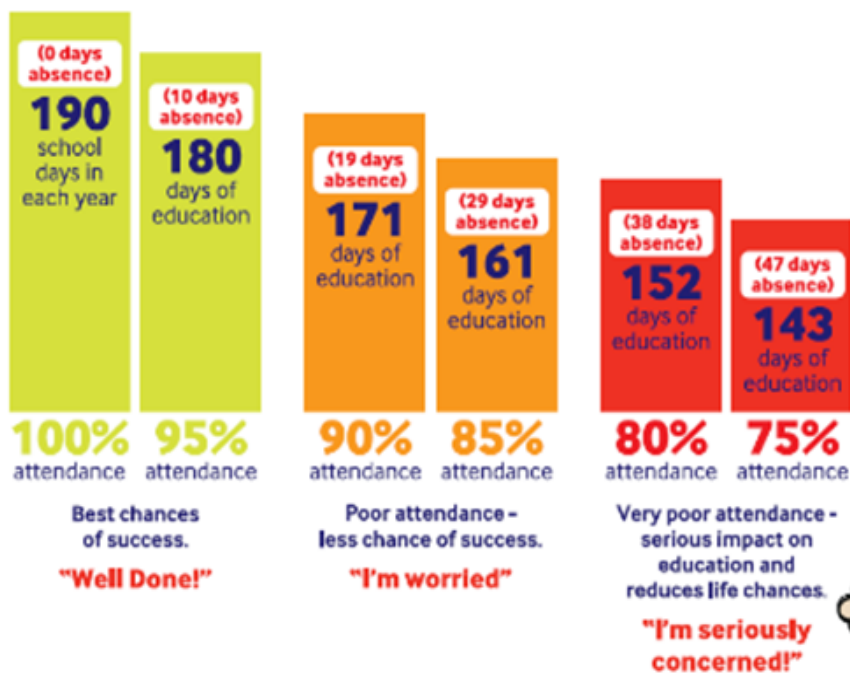
# Good attendance means...

being in school at least 95% of the time or 180 to 190 days

## 175 days not at school!

All this time for shopping, holidays and appointments

365 days in a calendar year



Did you know? A 2 week holiday in term time means the highest attendance a child can achieve is

94.7%

## Gold Award Assembly



Our Gold Award Assembly will resume on Friday 19th January  
at 9:00am.