

What should you do?

If you think a child is being abused or harmed, take action straight away.

Who do I contact?

- Local Authority's Children's Social Care (Directgov)
- Your local Police
- The NSPCC's helpline (ring/text/website)

The helpline also offer service's to people with a disability and speakers of languages other than English.

The longer abuse or harm goes on, the longer it will take for a child to recover.

Worried? Frightened? Need someone to talk to?

- ♦ Childline 0800 1111
- ♦ NSPCC 0800 800 5000
- ♦ Text line 0800 056 0566
- ♦ www.childline.org.uk
- ♦ www.beatbullying.org
- ♦ www.thinkuknow.co.uk

Designated Safeguarding Lead persons in our school are

Mrs H Miller

Mrs P Mulligan

Mrs Gillian Argles

St Wilfrid's C.E .Primary School

Patterdale Road

Manchester, M22 4NR

Head of School,

Mrs Helena Miller

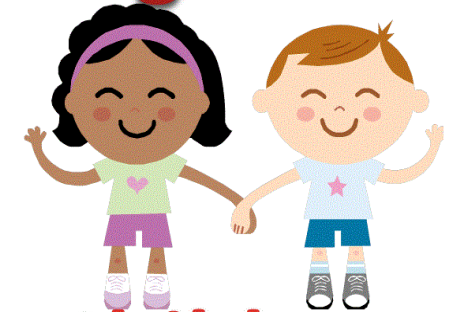
Phone number : 0161-998-3663

**ST. WILFRID'S
C.E. PRIMARY
SCHOOL**



“Learning together in God's love”

Safeguarding



Children



Safeguarding.

What does this mean?

Safeguarding is protecting children from abuse or neglect.

This includes all types of abuse and neglect of a child under the age of 18 by a parent, caregiver, or any other person. There are four common types of abuse:

- ◆ Physical Abuse
- ◆ Sexual Abuse
- ◆ Emotional Abuse
- ◆ Neglect

At St Wilfrid's safeguarding is everyone's responsibility

Here at St Wilfrids's CE Primary School, we are committed to safeguarding, promoting the welfare, health and development of all children, ensuring they are growing up in circumstances consistent with the provision of safe and effective care that enables children to have optimum life chances and enter adulthood successfully. This is in line with the duty placed on us by section 175 of the education act 2002.

Why do we need Safeguarding?

Making sure our school has policies and procedures in place helps to:

- Protect children and young people from harm and abuse.
- Enables staff and volunteers to know what to do if they are worried.

I don't know what to do... Who can I talk to?

Your teacher is always there to listen to you.

Write your worries down and post them in my box. I promise I will read them.

We will always listen on Childline
0800 1111

Talk to us. We're your friends

Neglect

Clothes are ill-fitting, filthy, or inappropriate for the weather.

REGULARLY NOT GIVEN ENOUGH FOOD TO EAT.

frequently unsupervised or left alone or allowed to play in unsafe situations and environments.

Bullying

Physical

Physically hurting someone
kicking, hitting, pushing.

Types and Warning Signs of Abuse

Emotional

Constant belittling, shaming, and humiliating a child.

Excessively withdrawn, fearful.

Is frequently late or missing from school.

Telling a child he or she is "no good," "worthless," "bad," or "a mistake."

Displays knowledge or interest in sexual acts inappropriate to his or her age.

Makes strong efforts to avoid a specific person, without an obvious reason.

Sexual

The views and voices of our children are very important to us.

We make sure that our children know that members of staff are always prepared to listen to them.

ATTENDANCE

- ◆ When a child is absent or missing from school, they could be at risk of significant harm.
- ◆ Regular attendance at school makes a critical contribution to safeguarding.
- ◆ Monitoring children's attendance enables us to identify children and families who need early intervention support.